

KENTUCKY DEPARTMENT OF HIGHWAYS

McCRACKEN COUNTY

OLD BENTON RD. (KY. 284)

KY. 284 OVER CLARK'S RIVER

REFERENCE AND ESTIMATE OF QUANTITIES

LOCATION	ITEM	SHEET NO.	CONCRETE CU. YD.		REINF. STEEL LB.	STR. EXC. CU. YD. COM.	END BENT BACKFILL CU. YD.	HIGH STRENGTH HANDRAIL LIN. FT.	CYCLOPEAN STONE SLOPE PROT. SQ. YD.	STRUCTURAL STEEL LUMP SUM BID ①	LINSEED OIL PROT. COATING SQ. YD.	REMOVING EXISTING STRUCTURE LUMP SUM BID	6" Ø W.I. PIPE LIN. FT.	CAST IN PLACE CONCRETE PILES LIN. FT.		*CLASS 'A' CONCRETE SEAL CU. YD.	SHEAR CONN. LUMP SUM BID ②
			CLASS 'A'	CLASS 'AA'										FURNISH	DRIVE		
QUANTITIES		1															
NOTES		2															
LAYOUT		3															
SOUNDINGS		4															
PILE RECORD		5															
END BENT 1		6 & 7	56.4	31.5	11,367	45	80		1170					1264	1264		
END BENT 2		6 & 7	56.4	31.5	11,367	45	80		1020					1264	1264		
PIER 1		8	233.2		23,192	745								2400	2400	32	
PIER 2		8	233.2		23,192	745								2400	2400	32	
PIER 3		9	102.5		12,915	195								1800	1800	20	
SUPERSTRUCTURE ELEVATIONS		10-14 15 & 16		503.5	107,081			964		①	2115		86				②
SUPERSTRUCTURE TOTALS				503.5	107,081			964		①	2115		86				②
SUBSTRUCTURE TOTALS			481.5	63.0	26,033	1775	100		2190								②
TOTALS			621.5	566.5	133,114	1775	100	964	2190	①	2115	Lump Sum	86	9128	9128	84	②

① Approximate weight of structural steel is 545,364 Lbs.

② Shear Connectors: Approximate weights included in lump sum bid for this item: Option 1. $\frac{3}{8}$ " x 4" Studs 1985#, 2. $\frac{3}{8}$ " x 4" Diameter Spirals 2731#, 3. 4" Channel 25.4 Lbs. 2904#

STANDARD DRAWINGS

AEM, H115D, SF-2A, P20, P21A, AWS-2

Special Provisions:
 #5 For Linseed Oil Protective Coating.
 #9 For High Strength Cast Aluminum Bridge Railing Post.
 #12 For Joint Sealing Compound.
 #35 For Class 'AA' Concrete.

BILL OF INCIDENTAL MATERIAL		
ITEM	NO.	SIZE & LOCATION
Joint Sealing Compound	2	1 x 3" x 34'-6" @ Exp. Dams

NOTE

Quantities shown in Bill of Incidental Material are approximate only and the contractor is responsible for furnishing enough material to complete the work in accordance with the Plans and Specifications.

*NOTE - Tremie Concrete Seal to be used if required by the Engineer. See Pier Details.

PLANS BY: ODELL, WRIGHT, MORGAN & BROWN, INC.

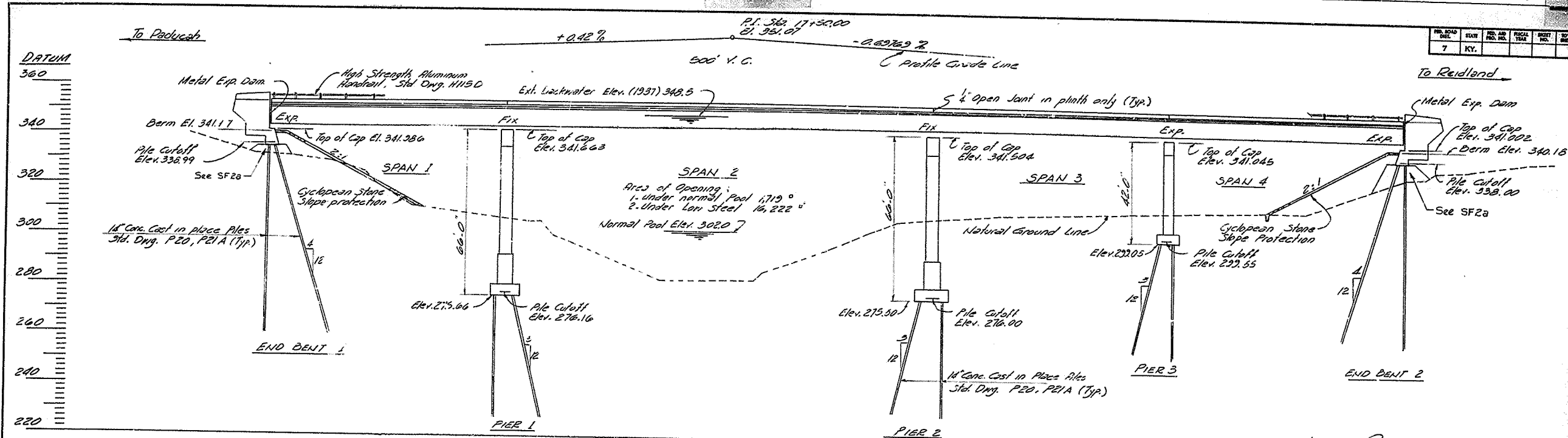
KY. 284 OVER CLARK'S RIVER SHEET 1 OF 16

COMMONWEALTH OF KENTUCKY
 DEPARTMENT OF HIGHWAYS
 FRANKFORT
 COUNTY OF
Mc CRACKEN
 OLD BENTON (KY 284)
 ROAD

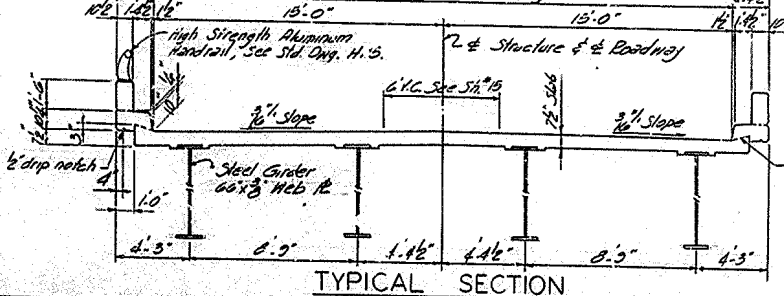
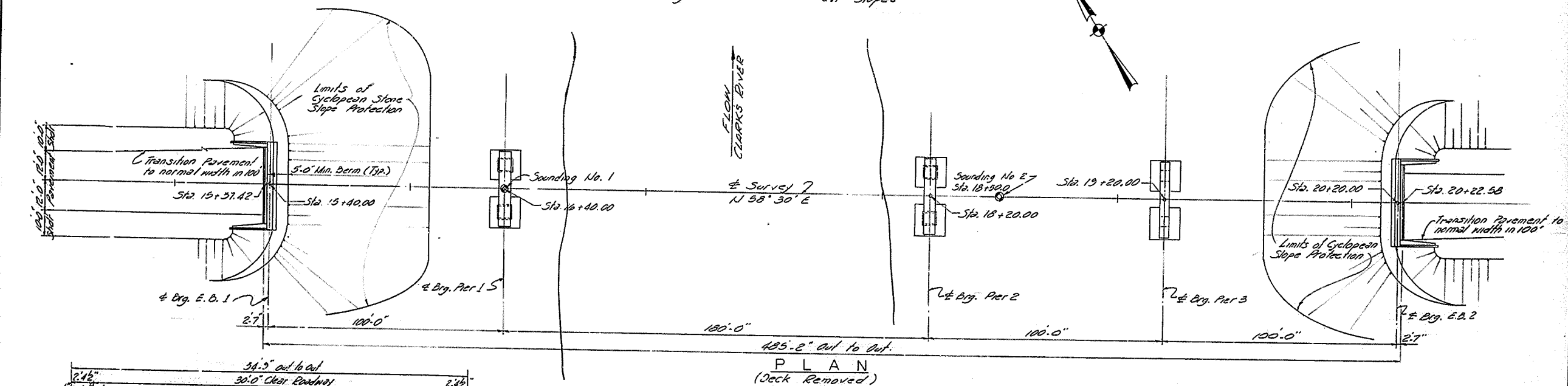
STATION 17+80.00 PROJECT NO. RS 73-52-4L

BRIDGE NUMBER RS 73-52	DRAWING NO. 17124
-------------------------------	--------------------------

FED. ROAD DIST.	STATE	PROJ. NO.	SHEET NO.	TOTAL SHEETS
7	KY.			



ELEVATION
 100'-180'-100'-100' Welded Plate Girder Spans @ 0° Stew.
 H. 20-44 Loading, 30'-0" Roadway, 2'-1'-4 1/2" Safety Curbs,
 44' Shoulders @ Bridge 2:1 Slopes



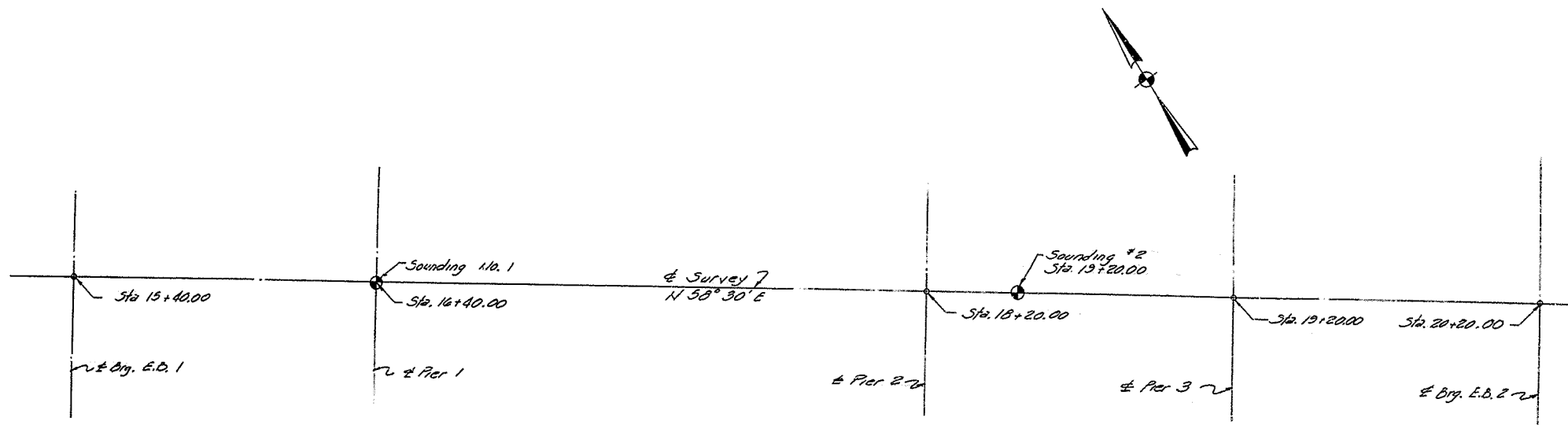
LAYOUT

KY. 284 OVER CLARK'S RIVER SHEET 3

COMMONWEALTH OF KENTUCKY
 DEPARTMENT OF HIGHWAYS
 FRANKFORT
 COUNTY OF
 Mc CRACKEN
 OLD BENTON (KY.284)
 ROAD

STATION 17+80.00 PROJECT NO.
 BRIDGE NUMBER 17124 INDEX

REV. NO.	DATE	BY	REASON
7	KY.		



SOUNDING LOCATIONS

①			②			DATUM
Blows/Ft	CU (7.5g. Ft.)	Type Failure	Blows/Ft	CU (7.5g. Ft.)	Type Failure	310
308.5	A 2 1.70	B	309.3	H 3 1.34	B	
302.0	C 1 .88	B	303.8	C 1 .50	B	300
294.0	D 12 1.41	B	293.8	D 6 .92	B	290
284.5	E 6 1.26	B	287.3	E 7 1.12	B	280
273.0	F 8 1.84	B	279.8	F 8	NP	270
	G 6	NP		G 8	NP	260
	F 25	NP		F 11	NP	250
257.5	G 22	NP	260.8	G 19	NP	240
	G 52	NP		G 46	NP	230
238.5			239.3			220

NOTE:

- B = Bulge Failure
 - NP = Non Plastic
 - A = Silty Clay Loam, Brown, Med. Firm & Moist.
 - C = Silty Loam, Gray, Soft, & Moist to Wet.
 - D = Silty Loam, Brown, Soft & Moist.
 - E = Clay Loam, Blue-Gray, Soft & Moist.
 - F = Fine Sand, Brown, Loose to Med. Loose & Wet
 - G = Coarse Sand w/ Fine to Med. Gravel, Gray, Dense & Moist.
 - H = Silty Clay Loam, Brown, Firm & Moist.
- Drilled to 70' with augers. No weak Stratum was found in either hole.
 Groundwater El. at Completion 35.5', After 24 Hours 21' Hole #1
 Groundwater El. at Completion 22', After 24 Hours 19' Hole #2

SOUNDING LOG

DESIGNED BY	DATE
REVIEWED BY	DATE
CHECKED BY	DATE
APPROVED BY	DATE

KY. 284 OVER CLARK'S RIVER SHEET 4

COMMONWEALTH OF KENTUCKY
 DEPARTMENT OF HIGHWAYS
 FRANKFORT
 COUNTY OF
 Mc CRACKEN
 OLD BENTON (KY.284)
 ROAD

STATION 17 + 80.00 PROJECT NO.

BRIDGE NUMBER	DRAWING NO. 17124
---------------	-------------------

SOUNDINGS

TABLE OF ELEVATIONS

Section	Left Gutter Line			Girder # 2			Girder # 3			Right Gutter Line		
	Const. El.	Top of Slab	Dim. "X"	Const. El.	Top of Slab	Dim. "X"	Const. El.	Top of Slab	Dim. "X"	Const. El.	Top of Slab	Dim. "X"
A-A	349.932						350.143			349.932		
0-0	349.936	394.05	.831	350.102	349.237	.865	350.147	350.102	349.246	.836	349.932	349.110
1-1	.975	.151	.824	.141	.293	.848	.184	.141	.295	.846	.975	.157
2-2	350.009	.190	.819	.175	.336	.839	.220	.175	.326	.849	350.009	.205
3-3	.039	.222	.817	.204	.371	.833	.250	.204	.344	.860	.039	.231
4-4	.040	.256	.804	.224	.403	.823	.271	.224	.364	.867	.060	.263
5-5	.076	.264	.811	.242	.431	.811	.287	.242	.360	.873	.076	.291
6-6	.086	.275	.811	.251	.442	.809	.297	.251	.383	.868	.086	.307
7-7	.092	.285	.807	.258	.466	.792	.303	.258	.390	.868	.092	.335
8-8	.098	.294	.804	.263	.467	.796	.309	.263	.390	.873	.098	.331
9-9	.106	.310	.756	.272	.518	.754	.317	.272	.475	.797	.106	.375
10-10	.115	.378	.737	.281	.520	.761	.326	.281	.489	.792	.115	.384
11-11	.128	.445	.686	.294	.585	.714	.339	.294	.563	.731	.128	.443
12-12	.144	.475	.669	.310	.588	.722	.355	.310	.584	.726	.144	.451
13-13	.174	.494	.678	.339	.601	.732	.385	.339	.596	.743	.174	.471
14-14	.215	.529	.686	.381	.631	.750	.426	.381	.635	.746	.215	.493
15-15	.258	.518	.740	.425	.610	.815	.469	.425	.617	.808	.258	.466
16-16	.304	.454	.850	.470	.577	.893	.515	.470	.585	.885	.304	.439
17-17	.357	.353	.804	.529	.632	.891	.568	.529	.681	.842	.357	.527
18-18	.406	.390	.816	.572	.669	.903	.617	.572	.693	.873	.406	.550
19-19	.444	.419	.727	.612	.789	.823	.657	.612	.817	.795	.444	.677
20-20	.477	.451	.726	.643	.831	.812	.688	.643	.858	.785	.477	.719
21-21	.496	.480	.694	.662	.873	.783	.707	.662	.890	.772	.496	.759
22-22	.511	.489	.672	.678	.898	.780	.722	.678	.917	.761	.511	.791
23-23	.516	.460	.656	.681	.939	.742	.727	.681	.931	.750	.516	.810
24-24	.512	.441	.647	.678	.957	.721	.723	.678	.949	.729	.512	.834
25-25	.492	.411	.621	.658	.957	.701	.703	.658	.947	.711	.492	.836
26-26	.464	.360	.606	.632	.954	.678	.677	.632	.953	.679	.464	.831
27-27	.433	.340	.593	.600	.930	.670	.644	.600	.928	.672	.433	.830
28-28	.395	.311	.584	.560	.899	.661	.606	.560	.899	.661	.395	.733
29-29	.349	.282	.567	.515	.860	.655	.560	.515	.859	.656	.349	.751
30-30	.297	.253	.644	.464	.764	.700	.508	.464	.739	.725	.297	.639
31-31	.240	.201	.649	.406	.703	.703	.451	.406	.711	.695	.240	.591
32-32	.182	.182	.649	.348	.658	.690	.393	.348	.649	.699	.182	.546
33-33	.119	.153	.566	.285	.658	.627	.330	.285	.657	.628	.119	.535
34-34	.056	.107	.549	.222	.633	.589	.267	.222	.621	.601	.056	.511
35-35	349.985	.438	.546	.151	.569	.582	.194	.151	.555	.596	349.985	.437
36-36	.939	.359	.580	.105	.481	.624	.150	.105	.491	.614	.939	.394
37-37	.898	.289	.609	.064	.428	.639	.109	.064	.413	.651	.898	.330
38-38	.861	.174	.687	.076	.327	.692	.072	.076	.323	.703	.861	.237
39-39	.827	.099	.728	349.993	.255	.739	.038	349.993	.243	.750	.827	.185
40-40	.796	.031	.765	.962	.205	.759	.007	.962	.185	.777	.796	.138
41-41	.766	348.909	.857	.931	.052	.879	349.977	.931	.075	.856	.766	348.998
42-42	.736	.853	.883	.902	.005	.897	.947	.902	.030	.872	.736	.932
43-43	.706	.849	.857	.872	348.975	.897	.917	.872	348.995	.877	.706	.913
44-44	.677	.849	.828	.842	.973	.869	.888	.842	.925	.847	.677	.893
45-45	.646	.813	.833	.813	.977	.836	.857	.813	.925	.828	.646	.863
46-46	.619	.803	.814	.784	.978	.806	.830	.784	.992	.792	.619	.845
47-47	.591	.824	.767	.757	.989	.768	.802	.757	349.003	.754	.591	.857
48-48	.569	.820	.749	.735	.953	.782	.780	.735	348.979	.756	.569	.851
49-49	.551	.747	.784	.717	.914	.803	.762	.717	.921	.796	.551	.793
50-50	.539	.718	.755	.699	.930	.769	.744	.699	.937	.762	.539	.810
51-51	.510	.727	.793	.676	.873	.803	.781	.676	.882	.793	.510	.735
52-52	.482	.689	.793	.648	.847	.801	.693	.648	.858	.790	.482	.710
53-53	.444	.652	.794	.612	.830	.782	.657	.612	.801	.811	.444	.663
54-54	.402	.607	.795	.568	.769	.799	.613	.568	.747	.821	.402	.617
55-55	.348	.558	.790	.515	.716	.799	.559	.515	.648	.867	.348	.549
56-56	.283	.488	.798	.449	.657	.792	.494	.449	.619	.830	.283	.509
57-57	.211	.411	.800	.377	.582	.795	.422	.377	.539	.838	.211	.433
58-58	.130	.349	.781	.296	.476	.821	.341	.296	.436	.860	.130	.380
59-59	.044	.249	.795	.210	.332	.878	.255	.210	.309	.901	.044	.223
60-60	348.952	.135	.817	.118	.253	.865	.163	.118	.216	.902	348.952	.087
B-B	.945						.154				.945	

TABLE OF ELEV. FOR CONTROL OF SLAB THICKNESS

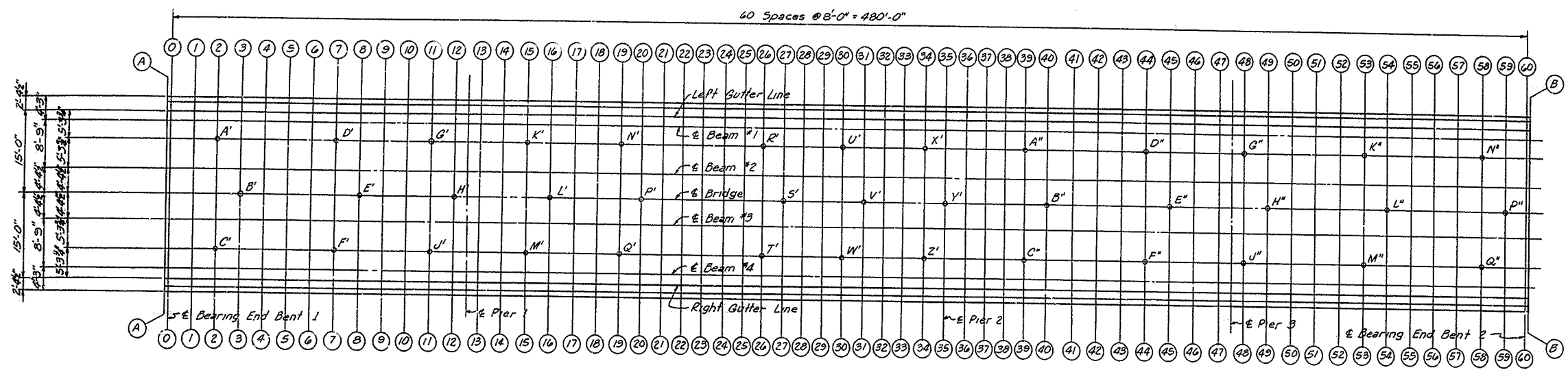
Point	Plan Elev. Top of Slab	Field Elev. Top of Form	Plan Elev. Slab Thick
A'	350.092		
B'	.250		
C'	.092		
D'	.175		
E'	.309		
F'	.175		
G'	.211		
H'	.355		
J'	.211		
K'	.342		
L'	.515		
M'	.342		
N'	.529		
P'	.686		
Q'	.529		
R'	.549		
S'	.644		
T'	.549		
U'	.381		
V'	.451		
W'	.381		
X'	.139		
Y'	.196		
Z'	.139		
A''	349.910		
B''	350.007		
C''	349.910		
D''	.760		
E''	.857		
F''	.760		
G''	.652		
H''	.762		
J''	.652		
K''	.529		
L''	.613		
M''	.529		
N''	.213		
P''	.255		
Q''	.213		

NOTE:
 SLAB THICKNESS CONTROL - After the slab forms are erected and before the slab reinforcement is placed, the Resident Engineer shall take field elevations at the slab thickness check points and enter them in the table in the space provided. The slab thickness shall then be computed. If the computed slab thickness varies more than 1/4" from the plan thickness, allowing 1/360 of the slab span for deflection of the form work, the form shall be adjusted until the computed slab thickness is within the tolerance allowed.

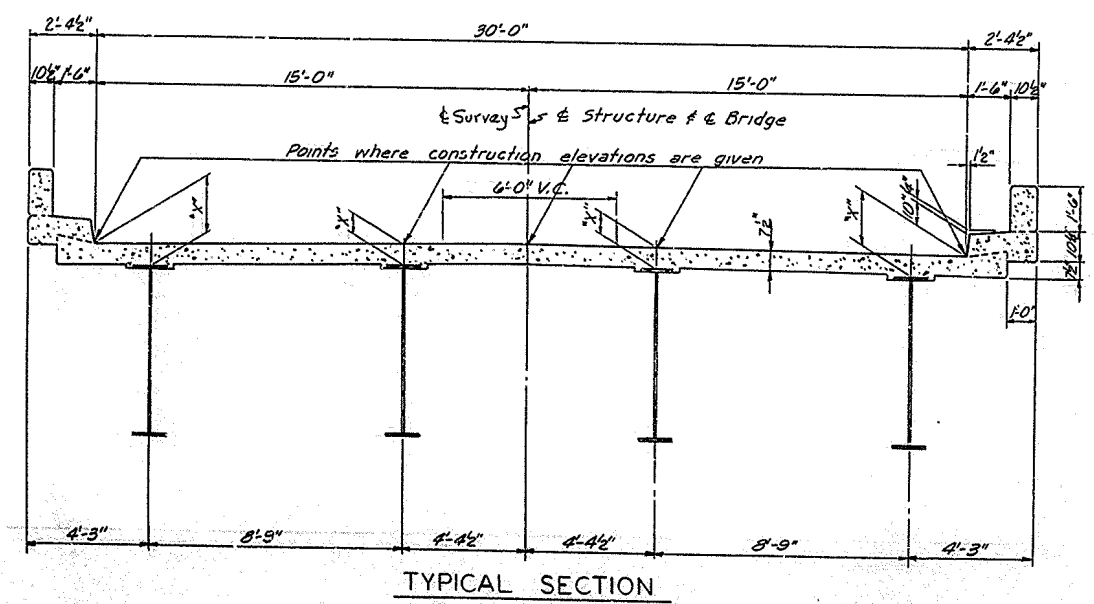
DESIGNED BY: P.F.H. DATE: _____
 CHECKED BY: P.F.H. DATE: _____
 DRAWN BY: P.F.H. DATE: _____
 SCALE: AS SHOWN

KY. 284 OVER CLARK'S RIVER SHEET 16
COMMONWEALTH OF KENTUCKY
 DEPARTMENT OF HIGHWAYS
 FRANKFORT
 COUNTY OF
Mc CRACKEN
 OLD BENTON (KY. 284)
 ROAD
 STATION 17+80.00 PROJECT NO. _____
 BRIDGE NUMBER _____ DRAWING NO. 17124

ELEVATIONS



PLAN OF SLAB



TYPICAL SECTION

CONSTRUCTION NOTES

Layout Sections 0-0 to 60-60 as shown in plan on this sheet. (Center punch marks on top of beams for elevation points.)

Take elevations on top of steel at points indicated after cross frames and lateral bracing are in place and after all false work has been removed, but before forms for concrete slabs have been put in place. Read elevations to three decimals using a target rod and enter readings in table under top of steel.

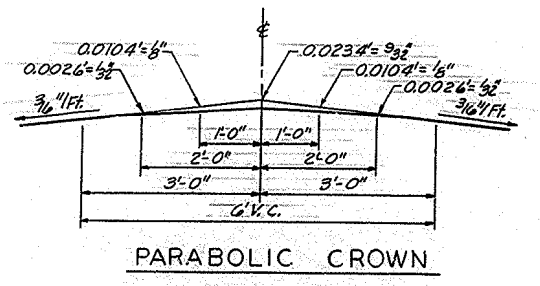
Compute dimension "X" as follows: Construction Elevation minus Top of Steel equals Dimension X.

Construction Elevations include camber due to weight of concrete slab, plinth, handrail and future surfacing.

For setting templates measure Dimension "X" above top of steel for top of template. Do not set template by elevations.

Construct handrail plinth to curb grade. Do not add camber to handrail plinth.

Slab elevation tolerances are based on delivery to the bridge site of fabricated steel having dimension and sweep tolerances meeting the requirements of A.P.S. Spec., current edition par. 407 for welded girders, and are based on erection of the steel undamaged.



PARABOLIC CROWN

ELEVATIONS

DESIGNED BY: PCH
 CHECKED BY: PCH
 DRAWN BY: PCH
 DATE: _____

KY. 284 OVER CLARK'S RIVER SHEET 15

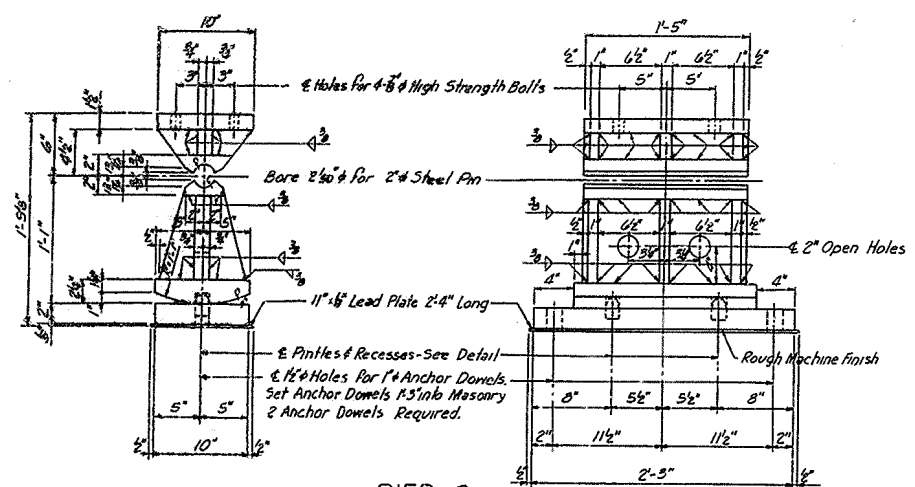
COMMONWEALTH OF KENTUCKY
 DEPARTMENT OF HIGHWAYS
 FRANKFORT
 COUNTY OF

McCRACKEN
 OLD BENTON (KY. 284)
 ROAD

STATION 17 + 80.00 PROJECT NO. _____

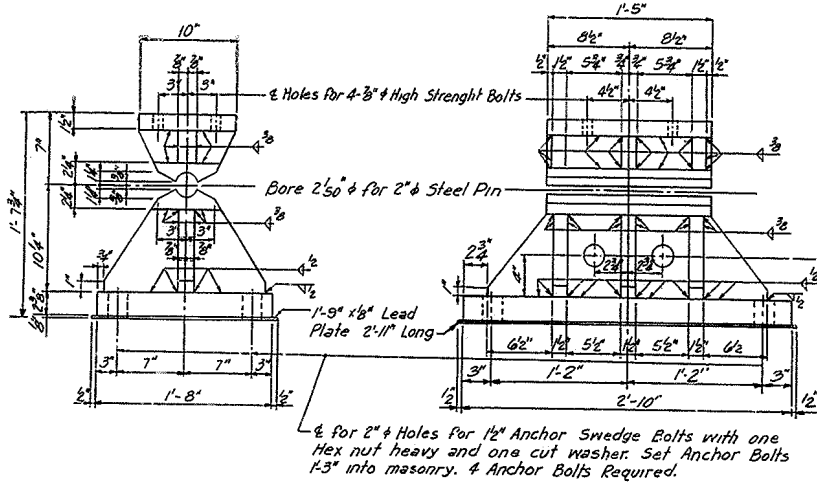
BRIDGE NUMBER 17124 DRAWING NO. _____

REV.	DATE	BY	CHKD.	REASON
7	KY.			



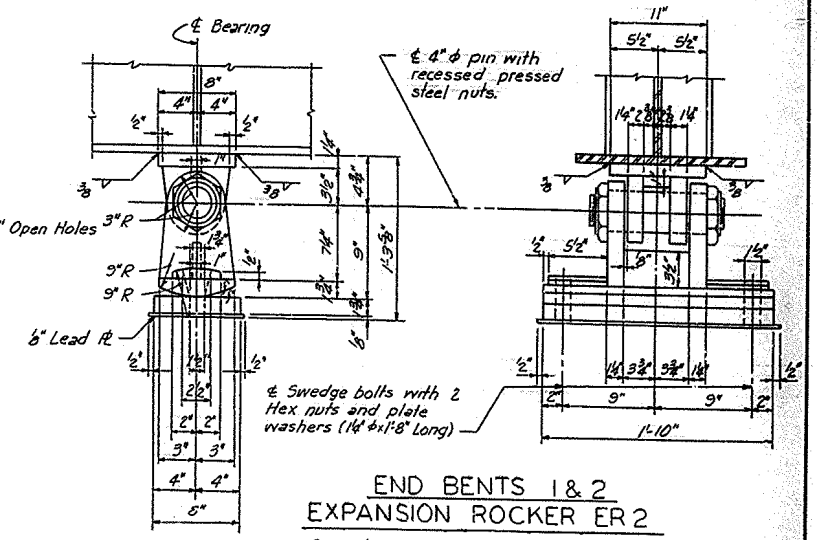
**PIER 3
EXPANSION ROCKER ER 1**

Capacity 265 kips
Weight each shoe assembly 550 Lbs.
Required 4



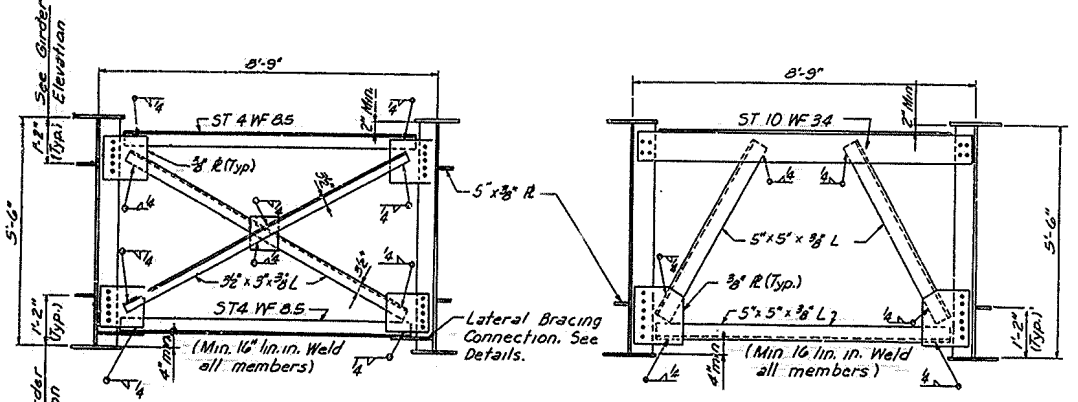
**PIERS 1 & 2
FIXED SHOE FS 1**

Capacity 375 kips
Weight each shoe assembly 985 Lbs.
Required 8



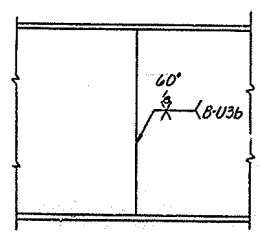
**END BENTS 1 & 2
EXPANSION ROCKER ER 2**

Capacity 150 kips
Weight each shoe assembly 320 Lbs.
Required 8

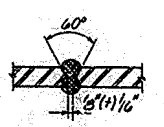


CF 2

CF 1

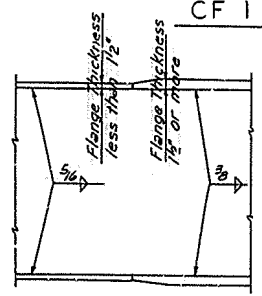


ELEVATION

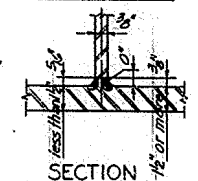


SECTION

SHOP WEB SPLICE
(Manual Shielded Metal-Arc Weld)

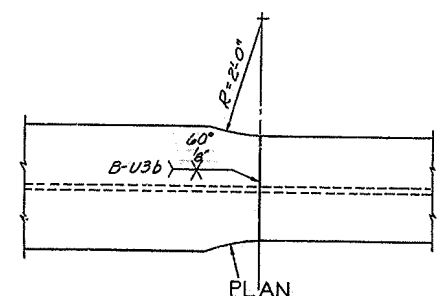


ELEVATION

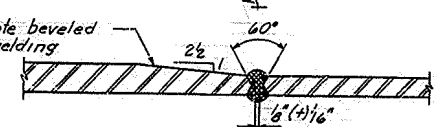


SECTION

FLANGE TO WEB WELD
(Submerged Arc Weld)

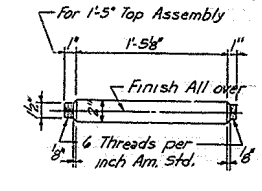


PLAN

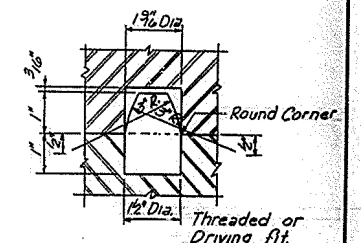


SECTION

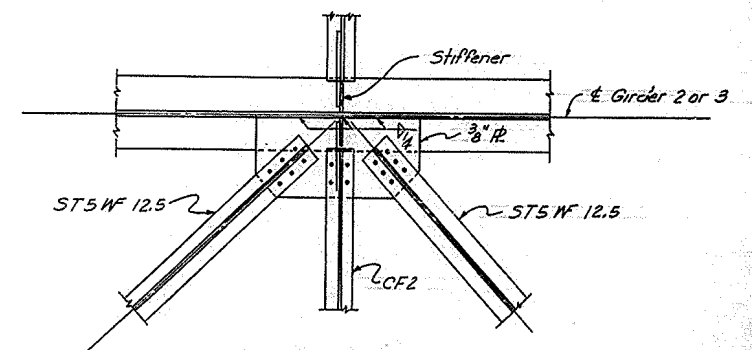
SHOP FLANGE SPLICE
(Manual Shielded Metal-Arc Weld)



STEEL PIN
(12 Required)



**DETAIL OF PINTLE
AND RECESS**



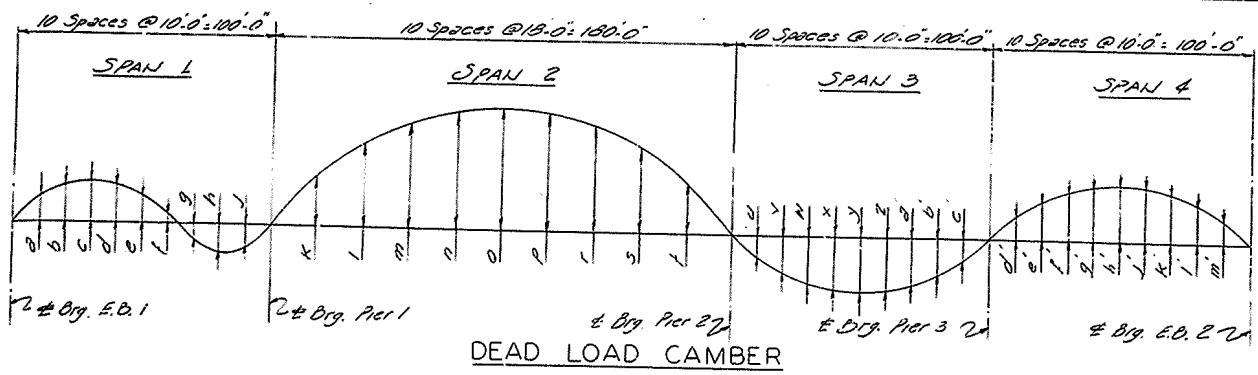
**LATERAL BRACING
CONNECTION**

KY. 284 OVER CLARK'S RIVER SHEET 13

COMMONWEALTH OF KENTUCKY
DEPARTMENT OF HIGHWAYS
FRANKFORT
COUNTY OF
Mc CRACKEN
OLD BENTON (KY. 284)
ROAD

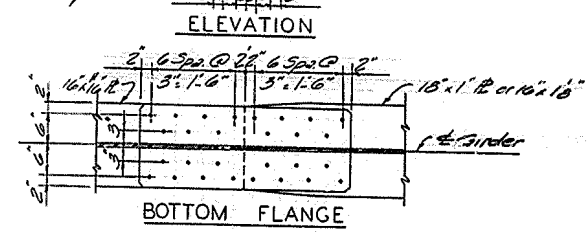
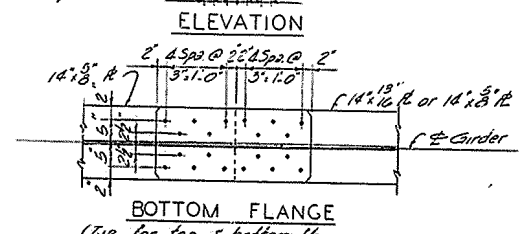
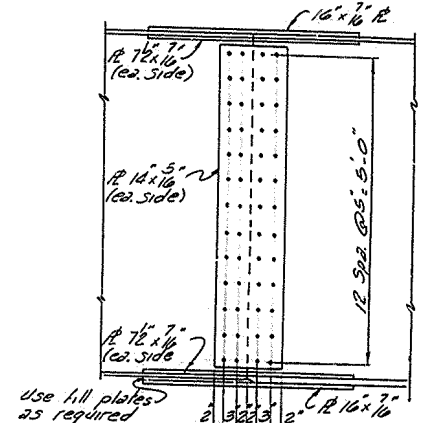
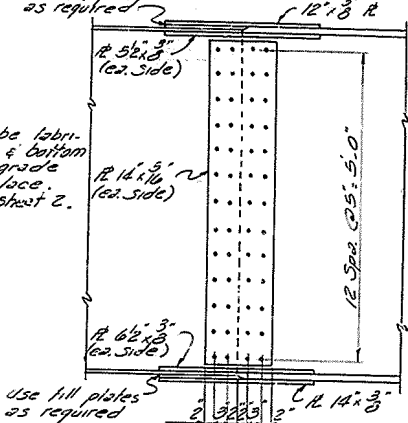
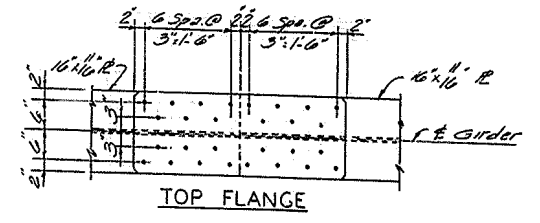
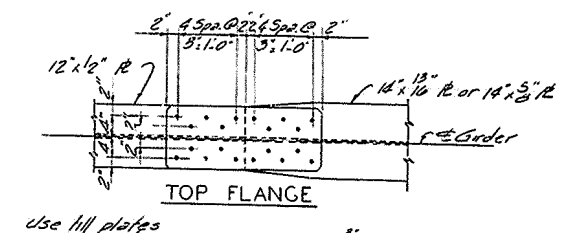
STATION 17 + 80.00 PROJECT NO. _____
BRIDGE NUMBER _____ DRAWING NO. 17124

SUPERSTRUCTURE



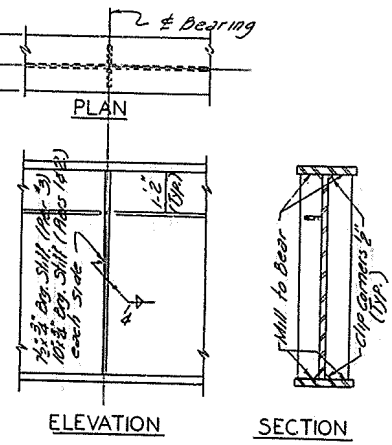
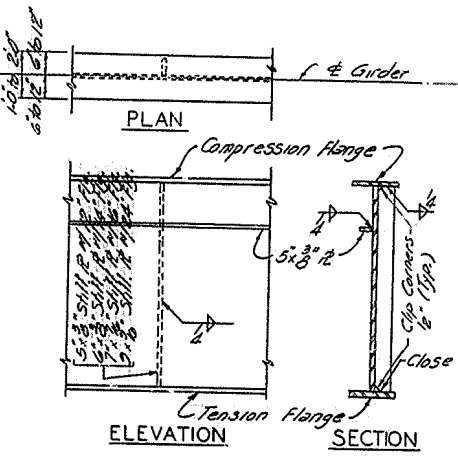
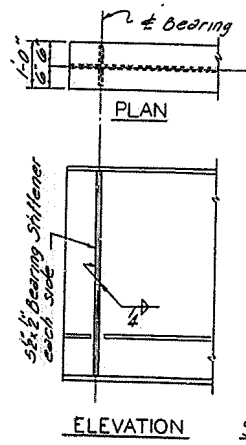
DEAD LOAD CAMBER											
Point	Steel Δ	Conc. Δ	Total Δ	Point	Steel Δ	Conc. Δ	Total Δ	Point	Steel Δ	Conc. Δ	Total Δ
a	1/4"	3/16"	5/8"	n	1/4"	3/16"	5/8"	o	1/4"	3/16"	5/8"
b	1/4"	3/16"	5/8"	o	1/4"	3/16"	5/8"	p	1/4"	3/16"	5/8"
c	3/8"	3/8"	3/4"	p	1/4"	3/16"	5/8"	q	1/4"	3/16"	5/8"
d	1/4"	3/16"	5/8"	q	1/4"	3/16"	5/8"	r	1/4"	3/16"	5/8"
e	1/4"	3/16"	5/8"	r	1/4"	3/16"	5/8"	s	1/4"	3/16"	5/8"
f	0"	0"	0"	s	1/4"	3/16"	5/8"	t	1/4"	3/16"	5/8"
g	0"	0"	0"	t	1/4"	3/16"	5/8"	u	1/4"	3/16"	5/8"
h	1/4"	3/16"	5/8"	u	1/4"	3/16"	5/8"	v	1/4"	3/16"	5/8"
i	1/4"	3/16"	5/8"	v	1/4"	3/16"	5/8"	w	1/4"	3/16"	5/8"
j	1/4"	3/16"	5/8"	w	1/4"	3/16"	5/8"	x	1/4"	3/16"	5/8"
k	1/4"	3/16"	5/8"	x	1/4"	3/16"	5/8"	y	1/4"	3/16"	5/8"
l	1/4"	3/16"	5/8"	y	1/4"	3/16"	5/8"	z	1/4"	3/16"	5/8"
m	1/4"	3/16"	5/8"	z	1/4"	3/16"	5/8"				

NOTE: Girder is to be fabricated so that top & bottom will be parallel to grade with full load in place. See General Note, Sheet 2.



SPLICE DETAILS

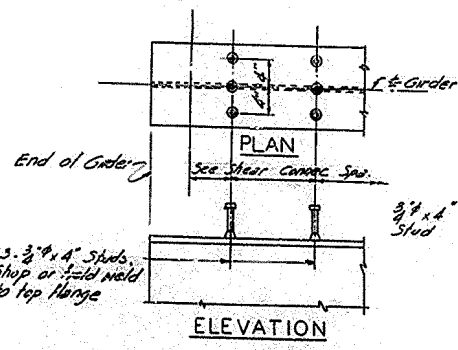
NOTE: Use 1" High Strength Bolts in Field Splices. All other bolted connections are 5/8" High Strength Bolts unless otherwise noted.



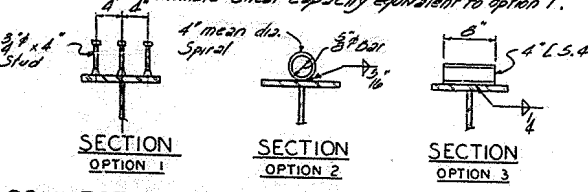
BEARING STIFFENER AT END BENTS

TYP INTERMEDIATE STIFFENER DETAILS

BEARING STIFFENER AT PIER



NOTE: Contractor may use any of the three types of shear connectors shown. The option selected shall be used throughout the job. Spacings for option 1 are shown. If option 2 or 3 is used the pitch shown on the shop details must have an ultimate shear capacity equivalent to option 1.



SHEAR CONNECTOR DETAILS

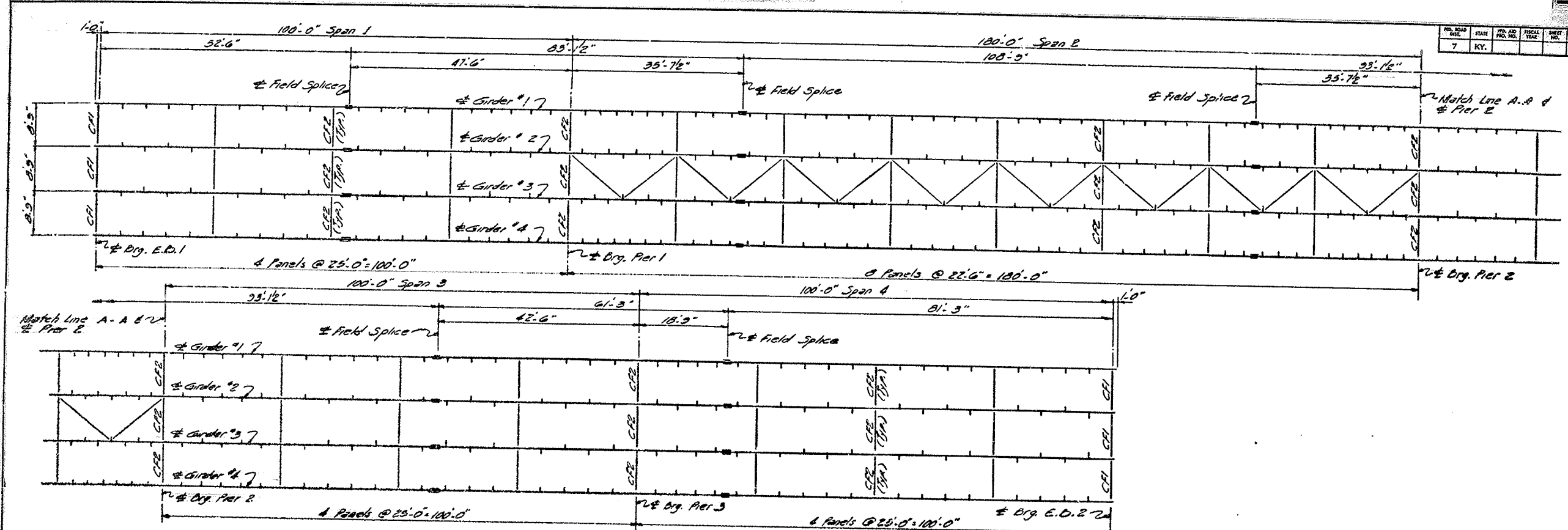
SUPERSTRUCTURE

KY 284 OVER CLARK'S RIVER SHEET 12

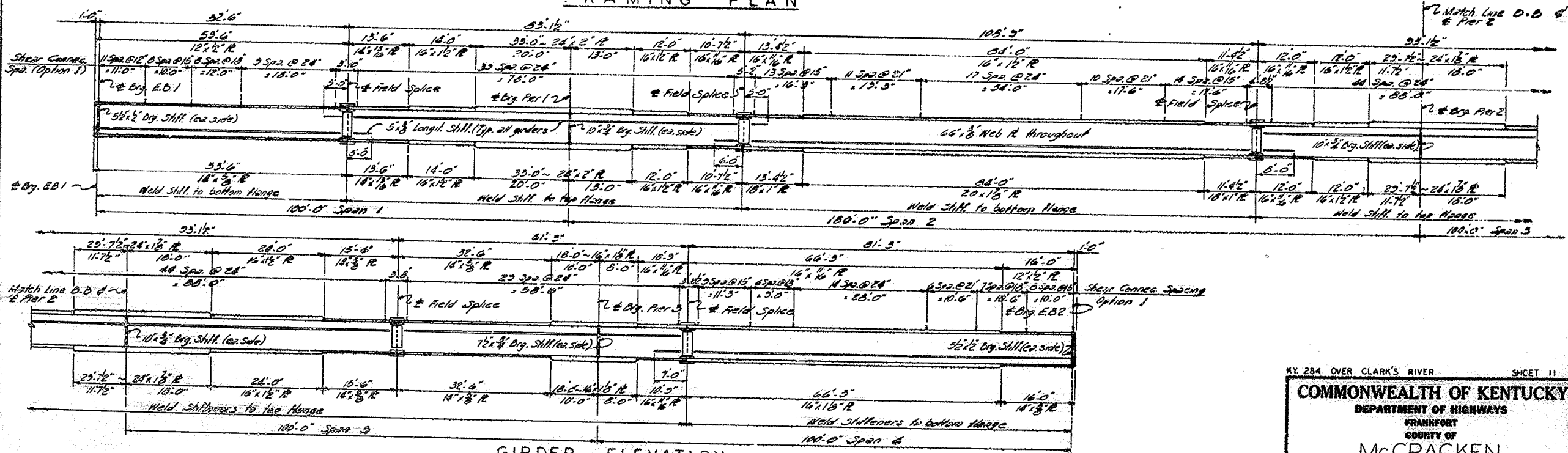
COMMONWEALTH OF KENTUCKY
 DEPARTMENT OF HIGHWAYS
 FRANKFORT
 COUNTY OF
McCRACKEN
 OLD BENTON (KY.284)
 ROAD

STATION 17 + 80.00 PROJECT NO. _____
 BRIDGE NUMBER _____ DRAWING NO. _____ NO. _____
 17124

NO. ROAD DIST.	STATE	FED. AID PROJ. NO.	FISCAL YEAR	SHEET NO.	TOTAL SHEETS
7	KY.				



FRAMING PLAN



GIRDER ELEVATION
(For Intermediate Stiffeners spacing and location, see Framing Plan.)

SUPERSTRUCTURE

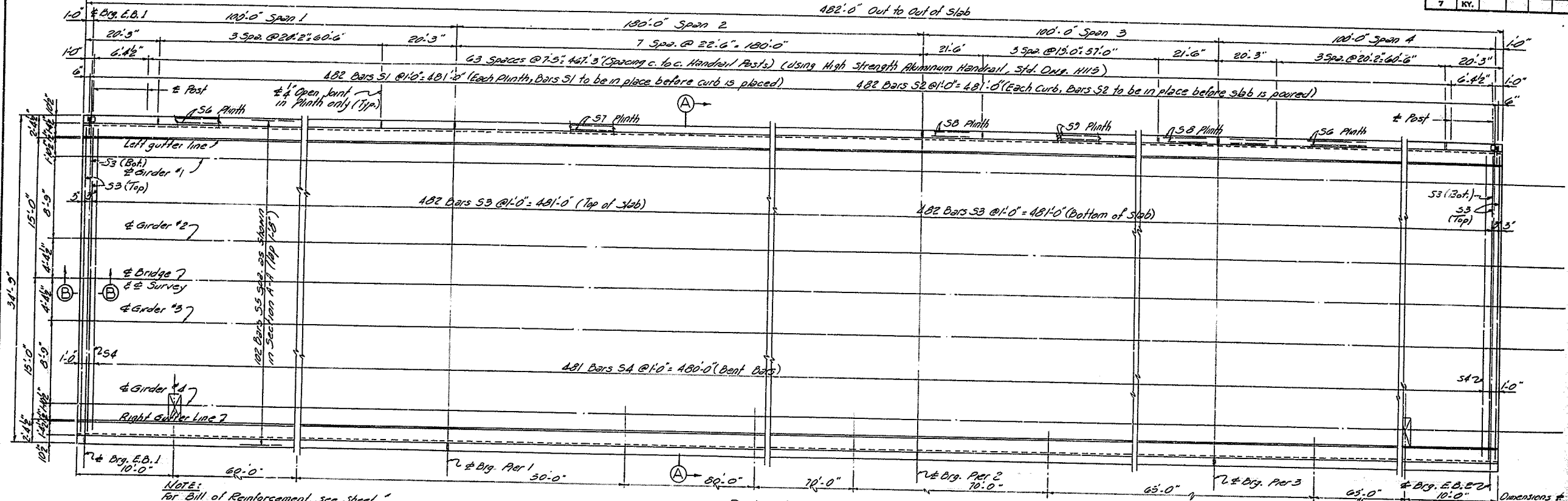
DESIGNED BY: [Signature]
 CHECKED BY: [Signature]
 DATE: [Date]
 REVISIONS: [Table]
 DRAWN BY: [Signature]
 DATE: [Date]

KY. 284 OVER CLARK'S RIVER SHEET 11

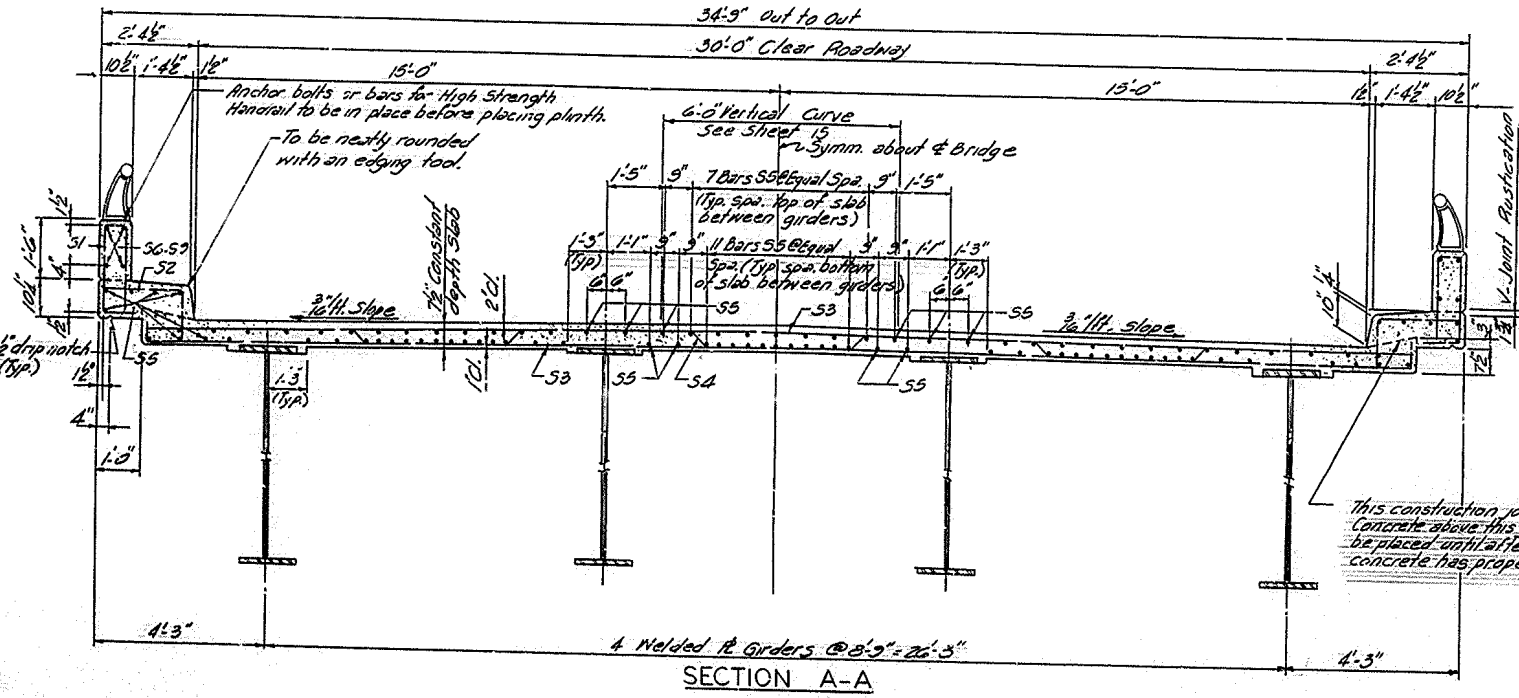
COMMONWEALTH OF KENTUCKY
 DEPARTMENT OF HIGHWAYS
 FRANKFORT
 COUNTY OF
McCRACKEN
 OLD BENTON (KY. 284)
 ROAD

STATION 17+89.00 PROJECT NO. [Blank]
 BRIDGE NUMBER [Blank] DRAWING NO. 17124

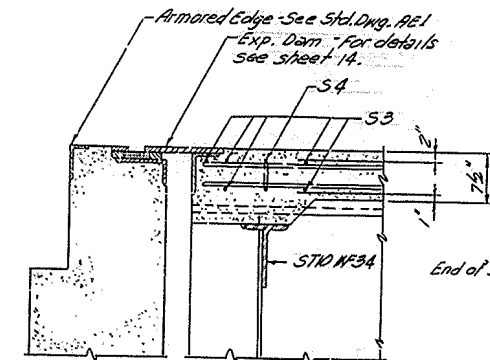
NO.	DATE	BY	FOR	TOTAL
7	KY.			



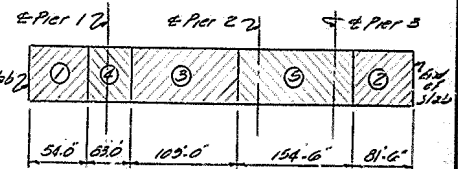
PLAN
(Drains spacing typical each curb)



SECTION A-A



SECTION B-B



POURING ORDER

The pouring sequence of the slab may be changed with the written approval of the Engineer.

ESTIMATE OF QUANTITIES

Concrete, Class AA	503.5	Cu/Yds
Reinforcement	107081	Lbs.

This construction joint is mandatory. Concrete above this joint shall not be placed until after the deck concrete has properly cured.

KY. 284 OVER CLARK'S RIVER SHEET 10

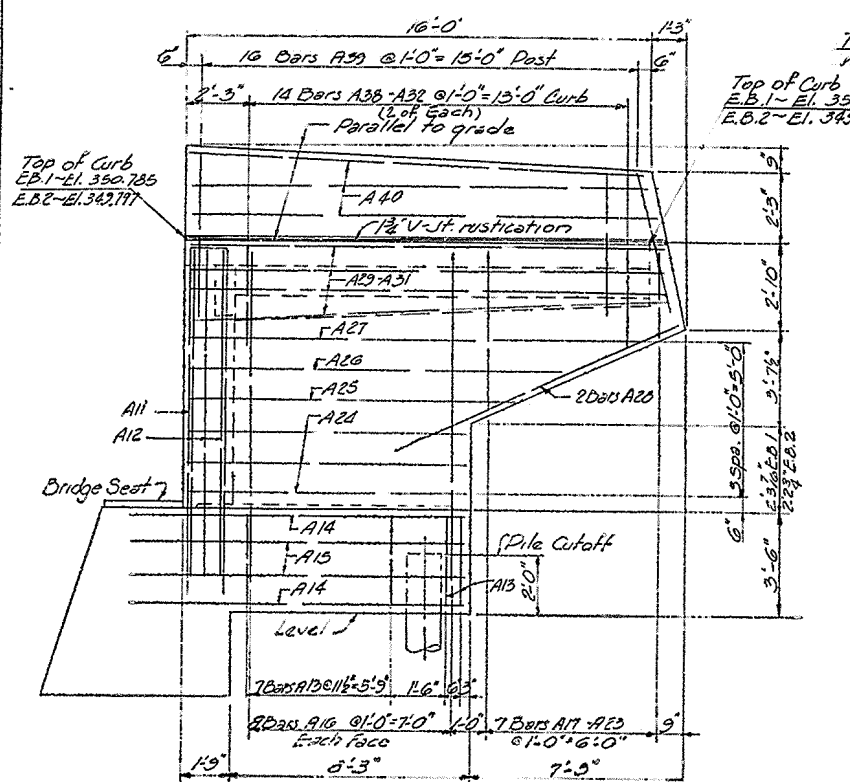
COMMONWEALTH OF KENTUCKY
 DEPARTMENT OF HIGHWAYS
 FRANKFORT
 COUNTY OF
 McCRACKEN
 OLD BENTON (KY 284)
 ROAD

STATION 17+80.00 PROJECT NO. 17124

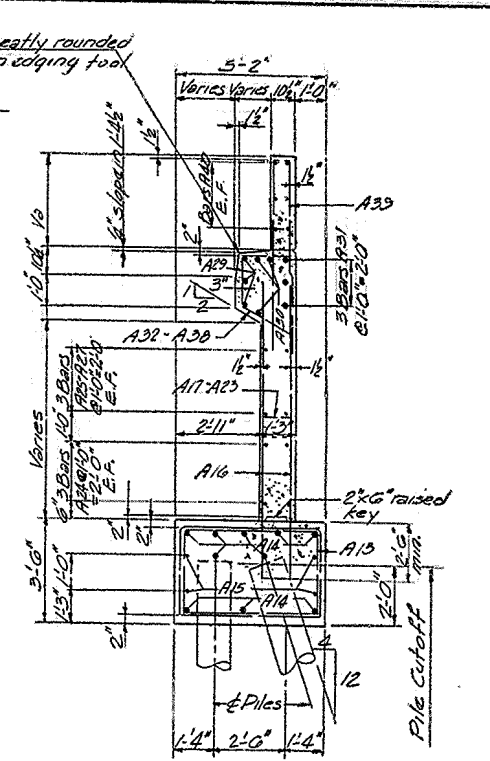
SUPERSTRUCTURE

BILL OF REINFORCEMENT --- END BENTS

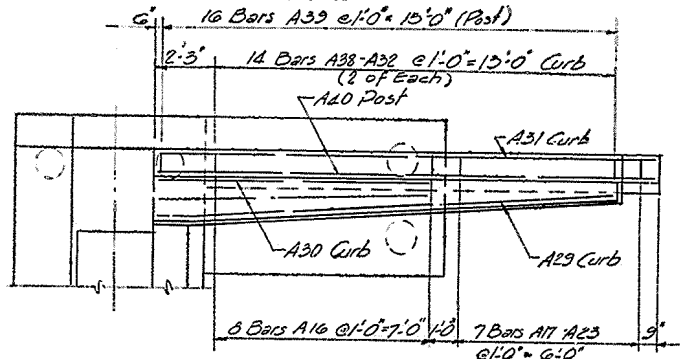
Mark	Type	Number	Bar Size	Length		Location	a		b		c		d	
				Ft.	In.		Ft.	In.	Ft.	In.	Ft.	In.		
A1	Str.	12	12	#10	30	5								
A2	"	0	0	0	30	5								
A3	(V)	12	12	0	6	3	0	6	5	4				
A4	"	12	12	0	6	7	0	6	5	0				
A5	(V)	34	34	5	22	9								
A6	(V)	16	16	5	5	0								
A7	Str.	16	16	5	2	9								
A8	(S)	30	30	7	11	4								
A9	(S)	30	30	6	13	8								
A10	Str.	18	18	5	24	5								
A11	(V)	0	0	9	23	6								
A12	"	0	0	7	22	8								
A13	(V)	18	18	6	16	9								
A14	Str.	20	20	10	11	5								
A15	"	0	0	6	10	3								
A16	Str.	32	32	6	10	0								
A17	(V)	2	2	6	12	5								
A18	"	2	2	6	11	5								
A19	"	2	2	6	10	5								
A20	"	2	2	6	9	5								
A21	"	2	2	6	8	5								
A22	"	2	2	6	7	5								
A23	"	2	2	6	6	5								
A24	Str.	12	12	6	9	8								
A25	"	4	4	6	10	0								
A26	"	4	4	6	12	8								
A27	"	4	4	6	14	8								
A28	"	4	4	6	10	0								
A29	(S)	6	6	10	17	5								
A30	(S)	6	6	10	13	10								
A31	"	6	6	10	19	2								
A32	(S)	4	4	5	7	0								
A33	"	4	4	5	7	3								
A34	"	4	4	5	7	6								
A35	"	4	4	5	7	9								
A36	"	4	4	5	8	0								
A37	"	4	4	5	8	3								
A38	"	4	4	5	8	6								
A39	(V)	32	32	6	12	5								
A40	Str.	12	12	5	15	9								



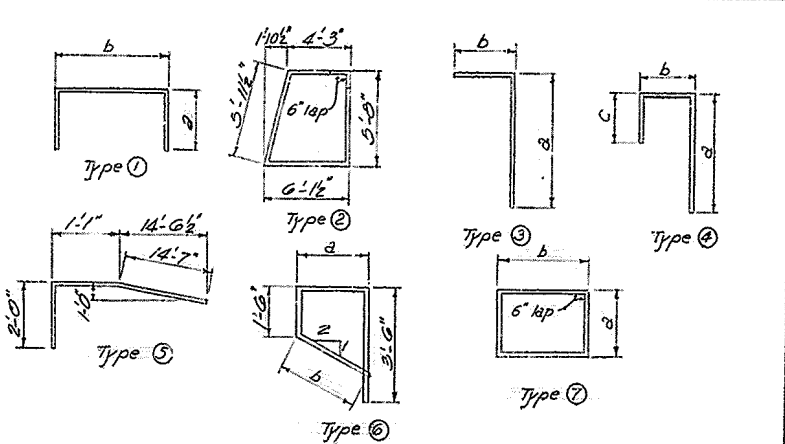
ELEVATION B-B



SECTION C-C



PLAN OF WING (Typical Reinforcement)



END BENTS

DESIGNED BY: J.E.O. CHECKED BY: J.E.O.
 DRAWN BY: G.E.S. TRACED BY:

KY. 284 OVER CLARK'S RIVER SHEET 7
COMMONWEALTH OF KENTUCKY
 DEPARTMENT OF HIGHWAYS
 FRANKFORT
 COUNTY OF
Mc CRACKEN
 OLD BENTON (KY. 284)
 ROAD
 STATION 17 + 80.00 PROJECT NO.
 BRIDGE NUMBER 17124

